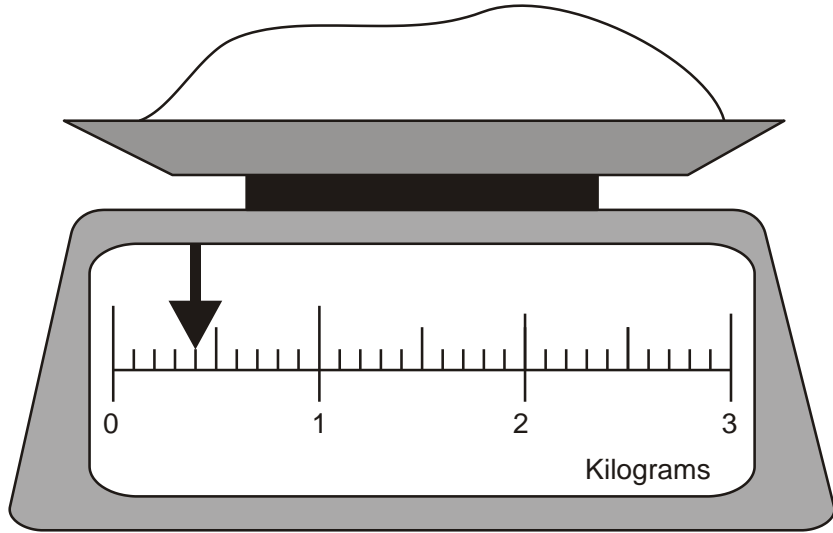


1. Here is some flour on a weighing scale.  
How many **grams** of flour are on the scale?



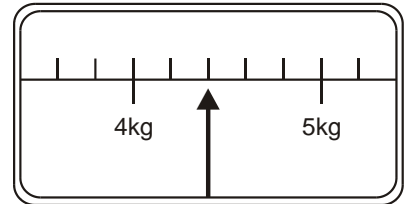
How much more flour must be added  
to the scale to make 1.6 kg?



2. This scale shows the weight of Fred's cat.  
What is the weight of Fred's cat?



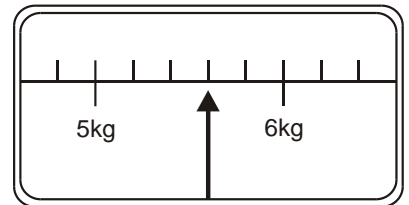
Fred's cat



This scale shows the weight of Fred's dog



Fred's dog

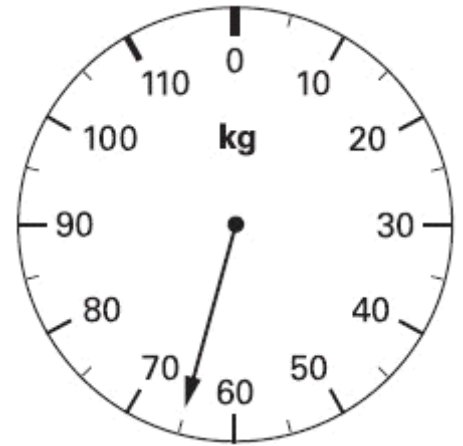
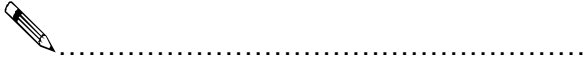


How much **more** does Fred's dog weigh than his cat?



3. This scale shows how much Mrs Patel weighs.

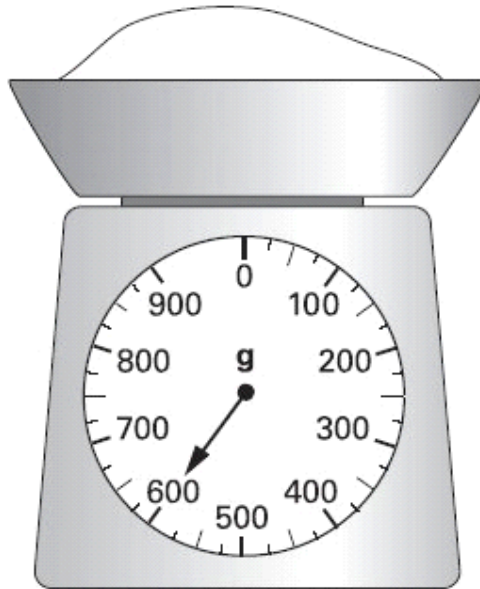
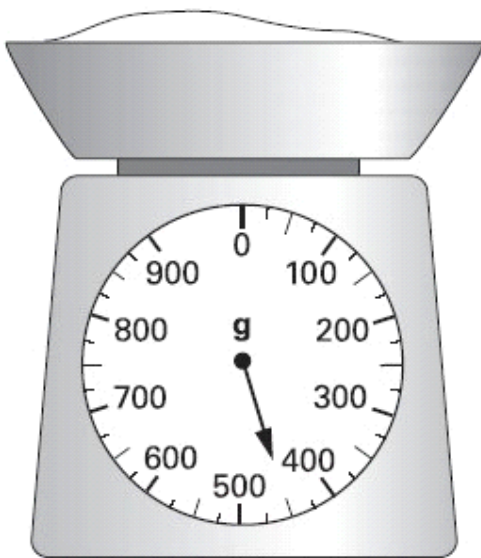
How much does Mrs Patel weigh?



4. Emily is making a cake.

She puts flour on the scales.

She then adds sugar to the flour.

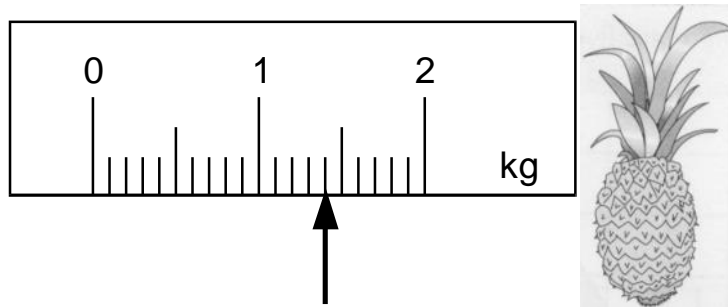


How much sugar does she add?

 Show your **method**. You may get a mark. 

g

5. On this scale, the arrow (↑) shows the weight of this pineapple.



Here is a **different** scale.

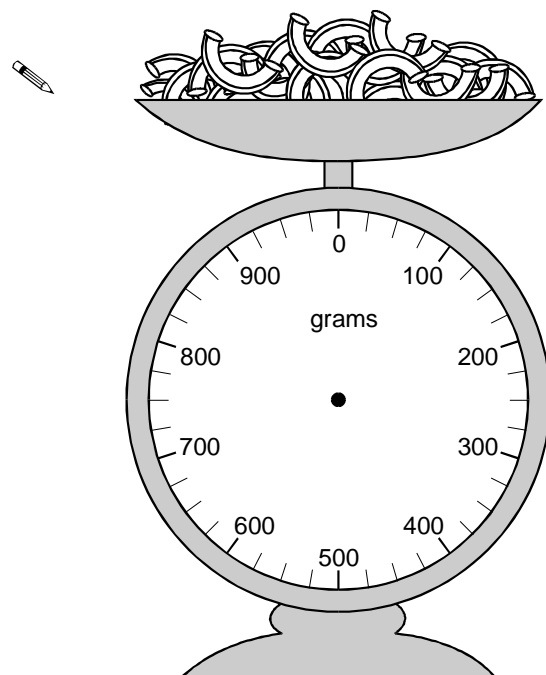
Mark with an arrow (↑) the weight of the **same** pineapple.



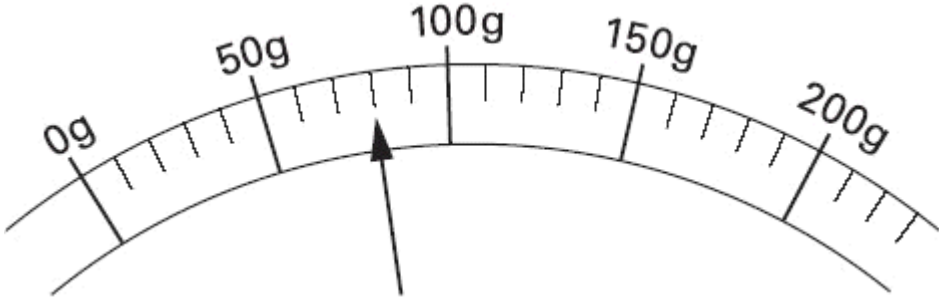
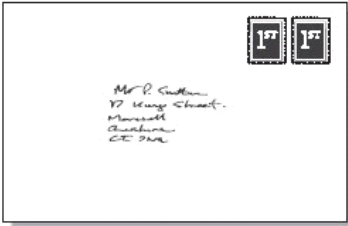
6. Jamie is cooking pasta.

He weighs 350 grams of pasta.

Draw an arrow on the scale to show 350 grams.



7. Here is a scale which shows the weight of a letter.



How much does the letter weigh?



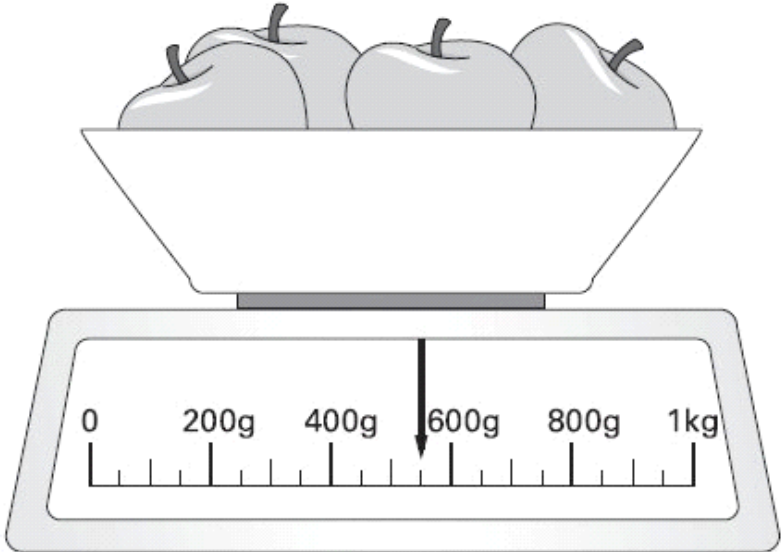
grams

8. Here are some apples.

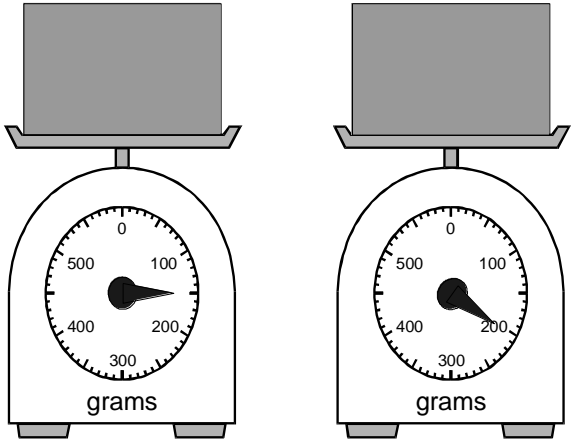
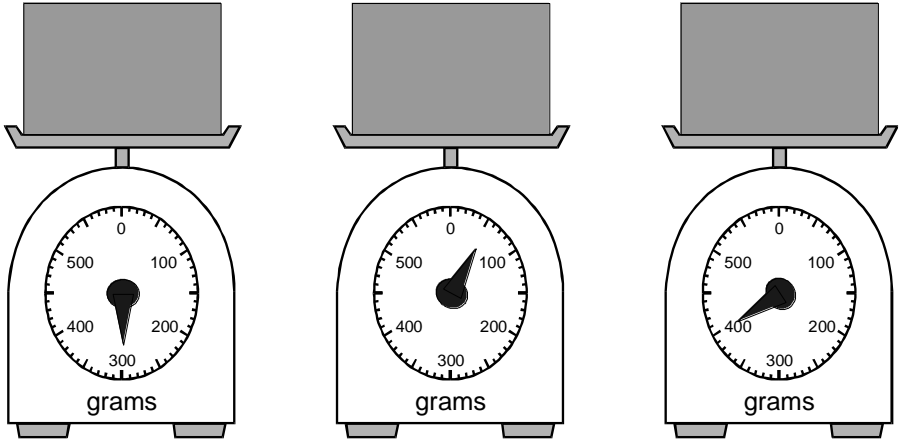
What is the total weight of these apples?



g



9. Put a ring around the lightest box.



10. What is the total mass of these apples?

kg

