

Paper 2 Reasoning Paper number 1

1) Complete the number sentence [2]

a) $50 - \square = 30$

b) $3 \times 94 = \square + 12$

2) A supermarket has 534 tubes of sweets at the start of the day. During the day, 114 tubes are sold and a further 162 tubes are delivered. How many tubes of sweets are there at the end of the day? [1]

3) Luca recorded the temperature ($^{\circ}\text{C}$) at 9 am outside his house on the 1st of each month for 6 months. [1]

Month	November	December	January	February	March	April
Temperature	-2°C	-6°C	-9°C	5°C	15°C	11°C

Find:

a) the highest temperature $^{\circ}\text{C}$

b) the lowest temperature $^{\circ}\text{C}$

c) the difference in temperature between the 1st of December and the 1st of April $^{\circ}\text{C}$

4) Complete the table

[1]

Fraction	$\frac{1}{2}$	$\frac{1}{5}$	$\frac{3}{4}$
Equivalent Fraction	$\frac{5}{10}$		

5) How many hours are there in 720 minutes?

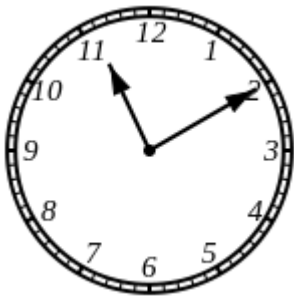
hours

[1]

6) Isabelle has an appointment at 11:31.

[1]

How many more minutes is this from the time shown below?












minutes

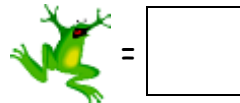
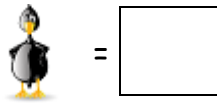
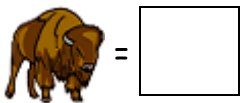
7) What number is a multiple of **both** 4 and 6, but ends in a 2?

[1]

8) Use the clues to find out what number each picture stands for.

[1]

			Sum of row
			9
			13
			9



9) Draw a rectangle that has 10 centimetre squares inside it.

[1]

One 5 cm length has been drawn for you on the grid of 1 cm squares.



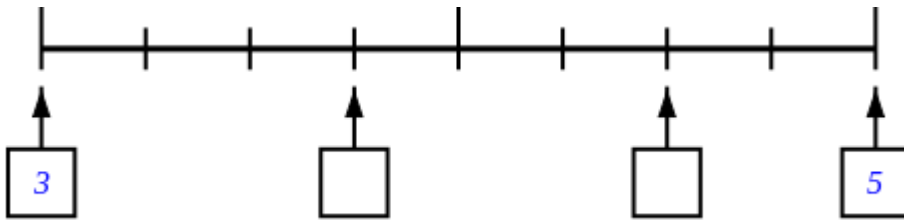
10) Which calendar year is represented by the following Roman numerals?

[1]

MMII

11) Write in the missing numbers

[1]



12) Match the pictures with the words

[1]

1.



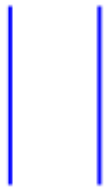
A. parallel

2.



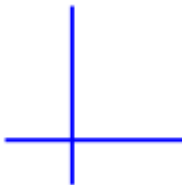
B. vertical

3.



C. perpendicular

4.



D. horizontal

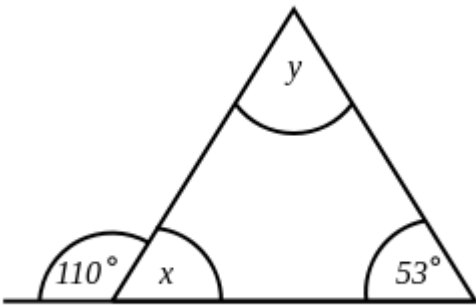
13) Round the numbers in the table.

[1]

Number	Nearest 10	Nearest 100
432	430	
474		
835		
799		

14) Find the value of x and y .

[1]



$x = \square^\circ$ $y = \square^\circ$

15) Two shops, Lidl and Tesco, both sell microwave meals.

[1]

<i>Lidl</i> <i>microwave meals</i> <i>7 for £5.39</i>

<i>Tesco</i> <i>microwave meals</i> <i>5 for £3.95</i>
--

At which shop are the microwave meals the best value for money?
Show all your working below.

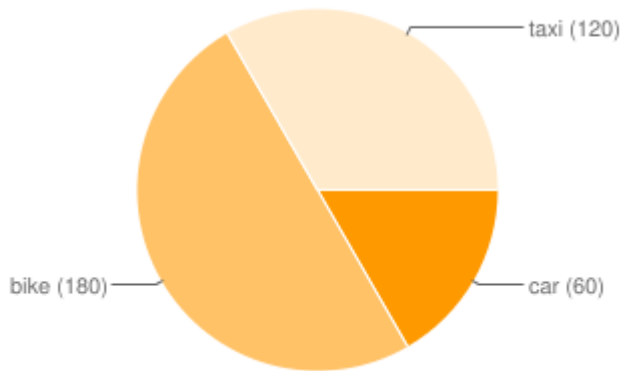
16) Find the mean of the data given below.

[1]

3 4 7 1 1 8

mean = \square

17) The pie chart below shows how a group of 24 students usually travel to school (angles are shown in brackets). [1]

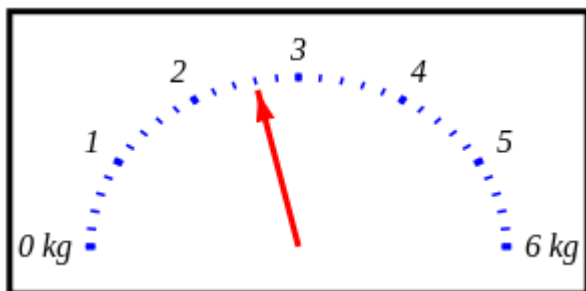


a) What fraction of the people travel by car?

b) How many students travel by bike?

c) How many more students travel by bike than taxi?

18) The weighing scales show the mass of 8 pineapples. [1]



How much does one pineapple weigh?

 g

19) Henry has 12 buttons. He gives his friend $\frac{3}{4}$ of them. Then he gives $\frac{1}{3}$ of [1] the rest to his brother.

How many buttons does he have left?

buttons

Solutions for the assessment KS2 NC Test - Paper 2 Reasoning

1) a) 20

b) 270

2) 582 tubes

3) a) highest = 15°C

b) lowest = -9°C

c) difference = 17°C

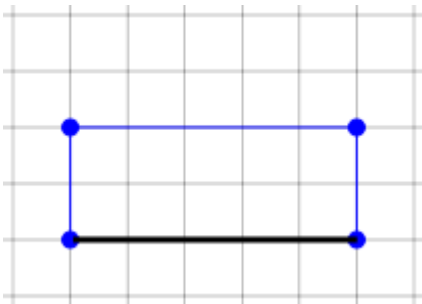
4) e.g. $\frac{2}{10}$, $\frac{6}{8}$

5) 720 minutes = 12 hours

6) 21 minutes

7) 12

8) 3, 5, 1



9)

10) 2002

11) missing numbers are 3.75 and 4.5

13) $432 = 430$, **400**

$474 = 470$, **500**

$835 = 840$, **800**

$799 = 800$, **800**

12) 1 D, 2 B, 3 A, 4 C

15) $5.39 \times 100 \div 7 = 77\text{p}$

$3.95 \times 100 \div 5 = 79\text{p}$

$77 < 79$, so Lidl is cheaper

14) $x = 70^{\circ}$, $y = 57^{\circ}$

16) Mean = 4

17) a) $\frac{1}{6}$, b) 12, c) 4

18) 325 g

19) 2